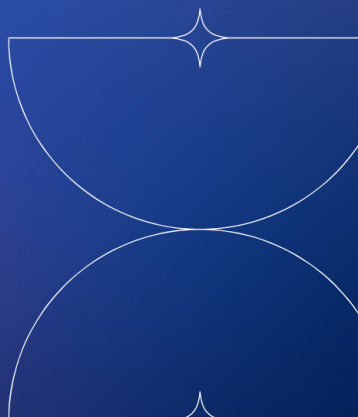
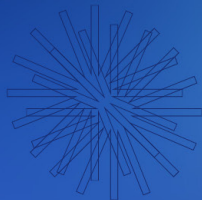




2021-2022



Annual Report



theNetworklaRed

Survivor-led organizing to end partner abuse
Dirigida por sobrevivientes • Movilizando para acabar con el abuso de pareja

Dear Friends,

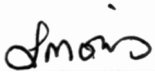
As we enter another year surviving the pandemic and continued violence against our communities across the world, we are motivated as ever in our mission to end partner abuse and educate our communities about its connection to oppression.

Just like abuse, oppression exists to maintain power and control and the tactics used to do so are identical. We served 939 survivors this year, many of whom were trans and non-binary who shared experiences of abusers hiding their hormones, threatening to out them to their employers, and using the wrong name and pronouns to refer to them. This abuse is supported by institutions like the healthcare system, which continues to fail queer and transgender communities, as we are witnessing in Alabama with the felony ban on gender-affirming care for trans youth. The impact this has on our communities is profound.

We want a world without violence and abuse, and with your continued support, we know we can build that world. Your contributions have provided sustenance for survivors and our survivor-led services. We cannot thank you - our donors, funders, supporters, volunteers, and community members - enough for the impact you've made on our ability to support survivors, especially during these precarious times. Your support makes all the difference in ending partner abuse.

Thank you. To many more years of continued growth,

Lisa Morishanti
President of the Board of Directors



Beth Leventhal
Executive Director

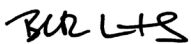


Table of Contents

3 About Us

4 Who We Are

**5-6 Outreach, Education and
Organizing**

7-8 Direct Service

9-10 Statistics

11-12 Financials

13-14 Supporters

About Us

Mission

The Network/La Red is a survivor-led social justice organization that works to end partner abuse in lesbian, gay, bisexual, transgender, kink, polyamorous, and queer communities. Rooted in anti-oppression principles, our work aims to create a world where all people are free from oppression. We strengthen our communities through mobilizing, education, and the provision of support services.

Anti-Oppression Principles

The Network/La Red defines anti-oppression as the beliefs, actions, and policies that aim to eliminate the imbalance of power within our society. Therefore, to do our work effectively, we believe that we must intentionally and consistently do the following:

Identify, confront, and take action against all forms of oppression.

Root our work in the experience of survivors.

Develop and encourage survivor leadership.

Support the ability and right of individuals—especially survivors—to make their own decisions.

Recognize that individuals can simultaneously experience multiple forms of oppression and privilege.

Work in solidarity with other movements striving to end oppression and violence.

Hold ourselves and one another accountable to these principles.

Who We Are

Staff

Capacity Building Manager

Miles Boucher

Executive Director

Beth Leventhal

Communications Associate

Christani Pal

Community Awareness

Associate Erica Pérez, JP
Delgado Galdamez, Loree
Drasich Meléndez

Survivor Leadership Associate

Charly Robles, Mary Kuan

Education Associate

Mirian Amaya

Grassroots Fundraiser

Miriam Priven

Director of Outreach, Education, & Organizing Programs

Cristina Dones

Operations Administrator

Rebecca Pang

Volunteer Program Manager

Joha Van Osten, Charly Robles

Community Services Advocate

Kai Yi, Alejandra Zarazua

Community Services Manager

Celia Castro, Patrick Maguire

Marketing & Communications Manager

Rebecca Wamala

Director of Survivor Services

Katie Atkinson

Housing Pathways Advocate

Jessie Lowell, Kenny Montalvan

Hotline Assistant

Joha Van Osten, Reed West

Housing Pathways Manager

Kishana Smith, Rose Fils-Aime

Hotline Manager

Celia Castro

Weekday Hotline Staff

Reed West, Rose Al Abosy

Weekday Overnight Staff

Amber Villanueva

Relief Staff Joha Van Osten, Rose
Al Abosy, Tatiana Gil, Kate Wechsler

Support Group Advocate

Raymi Huerta, Patrick McGuire

Weekend Hotline Staff

Lake Madden, Genessis Guzmán-
Betancourt, Yokaty Sálazar Reyes

Board

President: Lisa Morishanti

Treasurer: Jere Schultz

Clerk: Abelee Esparza

Members: Beth Leventhal

Outreach, Education & Organizing

Services

Training & Technical Assistance

Education on topics including, but not limited to:

Screening Tool

Partner Abuse in LGBTQ+ Communities

LGBTQ+ Accessibility in Your Organization

Working with Transgender & Nonbinary Survivors of Partner Abuse

Visibility & Outreach

Outreach and material distribution at community events, community collaborations, and media advocacy.

Organizing & Community Engagement

Fostering survivor leadership skills to develop community based strategies to end partner abuse.

Highlights

Wild Tongues: *(Re)Imagining Our Futures*

Our art and performance event, Wild Tongues, continues to be a sacred space made by and for LGBTQ+, kink, and polyamorous survivors of partner abuse that honors and uplifts the experiences of Black and Indigenous people of Color. Our theme this year, "How I Like My Care," evolved into an incredible night of musical performances, guided meditation, poetry, art, and film shared by survivors in our communities. In this live, virtual event, each performer introduced themselves with a list of how they liked their care, allowing us all to build more understanding around the care survivors desire and deserve.



Learning Community

12 providers representing 5 different organizations participated in our learning community cohort, learning about partner abuse in LGBTQ+ communities and the specific barriers and concerns that affect them. Through workshops, lectures, and individualized meetings, we set goals, timelines, and held each other accountable to a process that improves inclusion at all levels and finds the concrete steps to better serve our communities.

Fundraising

Providing survivor-centered services for our communities takes flexible funding, so at TNLR, we tackle fundraising as a team. In the Fall we ran a huge grassroots fundraising drive to increase our unrestricted funds to do this work exactly as we want to and our staff, board, volunteers, and community members helped us exceed our goal of \$75k!



In the Spring, we received hundreds of bids on our 2nd annual Pride Month Silent Auction and got all dressed up for our virtual anniversary fundraiser, *Paint the Town: La Red Carpet*, where some of our supporters competed in a photo contest to win a fashion consultation with QWEAR.

Special thanks to the new friends we've made at Lamplighter Brewing, Gather Here, and the Esme Block Party for their support, and to our 60+ monthly sustainers who help to cover costs, like rent for the three dozen survivors in our Transitional Housing program. Your contributions power our services, and we are grateful for your teamwork.



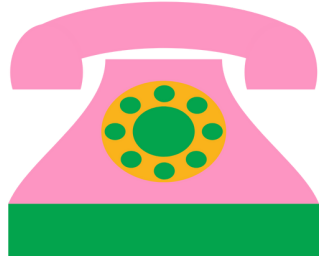
Direct Service

Services

24-Hour Partner Abuse Hotline

Crisis intervention, supportive counseling, safety planning, information and referrals, 24 hours a day, 7 days a week.

800-832-1901



Housing Pathways Program

Transitional Housing: Up to two years of rental assistance for up to 16 survivors and their families.

Safehome: Up to a 1-month stay in a confidential location for an individual or family.

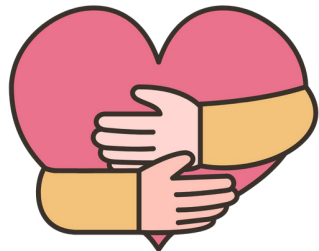
Both include ongoing supportive counseling and advocacy.

Individual Support & Advocacy

Safety planning, court accompaniment, information and referrals, assistance accessing and navigating social, legal, medical, and/or housing services and systems, and supportive listening and counseling.

Support Groups

Phone-based, peer-to-peer support groups including LGBTQ+ and QTBIPOC groups.



Highlights

Housing Pathways Program

In FY22, the Transitional Housing program served 30 survivors. Out of 30 survivors that we've served, 14 of those completed the program. Out of these 14, 65% reported being stable in current housing or a new permanent residence. Our Safehome program served 7 individuals. 85% of these individuals reported increased stability after leaving our Safehome. We've continued to serve 16 survivors and their families thanks to our partnership with HarborCov and additional funding.

Community Services Program

In FY22, TNLR experienced an increased need for services. In order to increase our capacity for supporting survivors, we have hired a Community Services Manager, a Hotline Manager, and began the process of hiring additional advocates. Our hotline received 5,210 phone calls, and the program as a whole provided 7,826 individual services to 939 survivors.

Support Groups

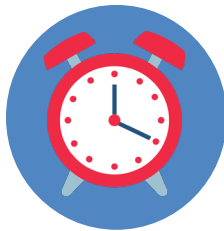
The Support Group program responded to need by continuing to offer 2-3 groups simultaneously. We offered 52 group sessions across 10 cycles, and continued to offer groups specifically for BIPOC and LGBTQ+, polyamorous, and kink survivors. Volunteers and interns co-facilitated groups alongside staff in order to support the program's ongoing growth and survivors' increasing interest in the program.



Statistics



Volunteers: **18**



Volunteer
Hours Donated: **1,349.66**



Volunteer
Training Hours: **101**



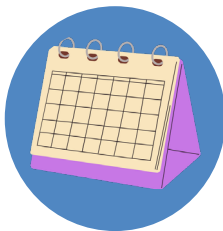
Workshop
Participants: **398**



Workshops
Provided: **46**



Materials/
Manuals
Distributed: **6,796**



Events TNLR
Attended: **10**



Survivors
Served: **939**



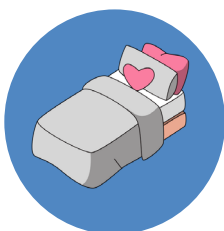
Hotline Calls:
5,210



Individual
Services
Provided: **7,826**



Survivors
Housed
(Transitional
Housing): **30**



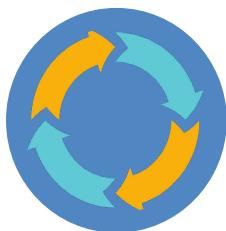
Bed Nights
(Transitional
Housing): **5,507**



Survivors
Housed
(Safehome): **7**



Bed Nights
(Safehome):
254



Support Group
Cycles: **10**



Support Group
Sessions: **12**

Financials

Funding Sources

	2022	2021
Contract Revenue:	89%	93.62%
Program Service Fees:	0.52%	0.7%
Grants & Contributions:	9.67%	4.76%
Special Events (net):	0.81%	0.92%
Total Income:	\$2,676,413	\$2,350,869

Functional Expenses

Program Services:	90.4%	90.24%
Management, General, & Administrative:	7.35%	7.24%
Fundraising:	2.25%	2.52%
Total Expenses:	\$2,368,895	\$2,333,421

Assets

Cash and Cash Equivalents: \$302,140

Investments: \$2,345

Accounts Receivable: \$426,469

Contribution Receivable: \$95,715

Prepaid Expenses: \$17,338

Property and Equipment: \$673

Total Assets: \$844,680

Liabilities

Accounts Payable: \$19,996

Accrued Expenses: \$128,443

Total Liabilities: \$148,439

Net Assets: \$696,241

Total Liabilities and Net Assets: \$844,680

Supporters

Government Contracts/Contratos del Gobierno

Massachusetts Department of Public Health
Massachusetts Executive Office of Public Safety and Security
Massachusetts Office for Victim Assistance
US Office of Violence Against Women

Event Sponsors/SpónsORES de Eventos

Beth Israel Deaconess Medical Center
Cambridge Health Alliance
Cityside Subaru
Community Credit Union of Lynn
Eastern Bank
Fenway Health
GLBT Legal Advocates and Defenders (GLAD)
Good Vibrations
Kauffman Law & Mediation
Kavod Boston
Massachusetts Trans Political Coalition (MTPC)
Newton Wellesley Hospital
Northeastern Univeristy Office of City & Community Engagement
Planned Parenthood League of MA
Qwear Fashion
Renewal House
Rockland Trust Bank
The Village Bank
Tito's Handmade Vodka

Community Collaborations/Colaboraciones Comunitarias

40 South Vintage
7ate9
All Keyed Up
All She Wrote Books
Boomerang's
Boda Borg
Boston Accupuncture Projec
Boston Red Sox
Boston Regional DV Providers
Brookline Art Center

Partidaries

Brookline Booksmith
Cambridge Center for Adult
Education
City Winery
Child Witness to Violence Project
Crashpad
Dance Complex
DangerLaw
Down Under Yoga
Emmanual Music
Esh Circus Arts
Family Justice Center
Fenway Violence Recovery Program
Flatbread Pizza & Bowling
Flour Bakery
FoMu Ice Cream
Gather Here
GLESN
Greater Boston Legal Services
Greentail Table
HarborCOV
Honeycomb Creamery
Improv Asylum
Institute of Contemporary Art
Jane Doe Inc.
JP Licks
KaytieMakes Jewelry
Lesbian Nightlife
Lamplighter Brewing
LGBQ/T Directors Group
Mamaleh's
Magpie
Make & Mend
Mass Audubon
MASS MoCA
Mass Relay
My Software Tutor
New England Philharmonic
National Coalition of
Anti-Violence Programs

The National Network to End
Domestic Violence
Northeastern
Olapidous Acupuncture
Our Deaf Survivors Center, Inc.
Pet Wants Newton
Porter Square Books
Reilly Inks
Resource Organizing Project
Said & Done Tattoo
Salsa y Control
Sanctuary Boston
Saturday SerieZ Zumba
SJ Blasko
Story Land NH
Swollen Monkey Improv
Temple Isaiah Sisterhood
Tikkun Olam Foundation
The Sports Museum
Tito's Handmade Vodka
Trans Resistance MA
Trident Booksellers & Café
The Video Background
UU Urban Ministry
Vinyl Index
Yip Fitness